

MORGAN 507HO11383

HO840003008328673

S-S-I BOOKEM MORGAN-ET TR TP TY TV TL TD HH5C HH1T HH2T HH3T HH4T HH6T

BOOKEM X SHOTTLE X O MAN

Born On: March 04, 2011

Beta-casein: A1A2 Kappa-casein: BE EFI: 8.6% aAa: 345216

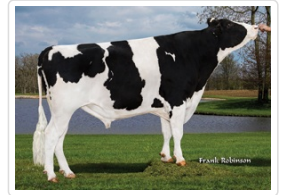
Sire: DE-SU 521 BOOKEM-ET

Dam: ROYLANE SHOT MINDY 2079-ET VG-86

2-02 3X 305D 15689 kgM 4.4% 573 kgF 3.3% 521 kgP

Daughter Average:

13266 kgM 507 kgF 3.80%F 411 kgP 3.10%P



CALVINGEASE PRODUCTIONMAXX ROBOMAXX SEXED ULTRA



Sandy-Valley Morgan Calvary



S-S-I Morgan Shalyn 8673-ET



Amities Morgan Sexymary

INDEXES

TPI	2507
NM\$	691
CM\$	707
Feed Efficiency (\$)	150
DWP\$	741
WT\$	1
CW\$	22

PRODUCTION

PTA Milk (lbs)	1530
PTA Protein (lbs)	52
PTA Protein (%)	0.02
PTA Fat (lbs)	63
PTA Fat (%)	0.02
Production Reliability %	99
Dtrs/Herds	4259/769

TYPE

PTA Type	1.41
Udder Composite	1.41
Feet & Leg Composite	0.84
Body Weight Composite	0.26
Dairy Composite	1.04
Type Reliability %	98
Dtrs/Herds	735/239

WELLNESS TRAITS

CDCB ZOETIS

Mastitis/Rel.%	2.2/91	103/97
Lameness/Rel.%		90/96
Retained Placenta/Rel.%	0.5/84	101/97
Metritis/Rel.%	1.0/85	101/97
Ketosis/Rel.%	0.4/81	101/95
Displaced Abomasum/Rel.%	0.2/82	92/96
Hypocalcemia/Milk	-0.3/69	
Fever/Rel. %		
Calf Respiratory/Rel. %		95/96
Calf Scours/Rel. %		109/96
Calf Livability/Rel. %		106/97

DAUGHTER FERTILITY

Fertility Index	2.0
DPR/Rel.%	2.2/98
HCR/Rel.%	0.9/97
CCR/Rel.%	2.6/98

SIRE FERTILITY

SCR/Rel %	0.5/99
-----------	--------

MANAGEMENT TRAITS

SCE/Rel %	7.0/99
DCE/Rel.%	4.7/97
Gestation Length/Rel.%	-1.6/99
Early First Calving/Rel.%	4.9/96
SSB/Rel.%	9.5/99
DSB/Rel.%	6.2/97
Productive Life/Rel.%	5.5/98
Livability/Rel.%	2.0/91
SCS/Rel.%	2.74/99
Milking Speed/Rel.%	99/86

Stature	Short		0.39	Tall
Strength	Frail		0.50	Strong
Body Depth	Shallow		0.45	Deep
Dairy Form	Tight Ribbed		0.81	Open Ribbed
Rump Width	Narrow		0.91	Wide
Rump Angle	High Pins		-2.03	Sloped
Rear Leg (side view)	Posty		0.89	Sickled
Rear Leg (rear view)	Hock-in		0.36	Straight
Foot Angle	Low Angle		1.35	Steep Angle
Feet & Leg Score	Low		0.91	High
Fore Udder	Loose		2.43	Strong
Rear Udder Height	Low		1.49	High
Rear Udder Width	Narrow		1.37	Wide
Udder Cleft	Weak		0.51	Strong
Udder Depth	Deep		1.48	Shallow
Front Teat Placement	Wide		0.54	Close
Rear Teat Placement	Wide		-0.09	Close
Teat Length	Short		0.47	Long